

Uni-Trend Technology (China) Co., Ltd

TEST REPORT

SCOPE OF WORK

EMC TESTING– UT305C+, UT305A+, UTi32

REPORT NUMBER

211230021GZU-001

ISSUE DATE

01 March 2022

[REVISED DATE]

[-----]

PAGES

42

DOCUMENT CONTROL NUMBER

EN 61326-1:2013-b

© 2017 INTERTEK



TEST REPORT

Applicant Name & Address : UNI-TREND TECHNOLOGY (CHINA) CO.,LTD.
No 6, Gong Ye Bei 1 st Road, Songshan Lake National High-Tech
Industrial Development Zone, Dongguan City, Guangdong Province,
China
Manufacturing Site : Same as applicant
Intertek Report No: 211230021GZU-001

Test standards

EN 61326-1: 2013
EN 61326-2-3:2013

Sample Description

Product : Infrared Thermometer
Model No. : UT305C+, UT305A+, UTi32
Electrical Rating : Type input: 5V, 1A; Powered by 1 x 3.7V 2600mAh 18650
rechargeable lithium battery
Serial No. : Not Labeled
Date Received : 30 December 2021
Date Test : 30 December 2021 to 23 February 2022
Conducted

Prepared and Checked By

Approved By:



Jed Guo
Engineer



Sky Zhu
Team Leader

This report is for the exclusive use of Intertek's Client and is provided pursuant to the agreement between Intertek and its Client. Intertek's responsibility and liability are limited to the terms and conditions of the agreement. Intertek assumes no liability to any party, other than to the Client in accordance with the agreement, for any loss, expense or damage occasioned by the use of this report. Only the Client is authorized to permit copying or distribution of this report and then only in its entirety. Any use of the Intertek name or one of its marks for the sale or advertisement of the tested material, product or service must first be approved in writing by Intertek. The observations and test results in this report are relevant only to the sample tested. This report by itself does not imply that the material, product, or service is or has ever been under an Intertek certification program.

Intertek Testing Services Shenzhen Ltd. Guangzhou Branch
Room 02, & 101/E201/E301/E401/E501/E601/E701/E801 of Room 01 1-8/F., No. 7-2. Caipin Road, Science City, GETDD,
Guangzhou, Guangdong, China

TEST REPORT

CONTENT

TEST REPORT	1
CONTENT	3
1. TEST RESULTS SUMMARY	4
2. EMC RESULTS CONCLUSION.....	5
3. LABORATORY MEASUREMENTS.....	6
4. EQUIPMENT USED DURING TEST	7
5. EMI TEST.....	10
5.1 CONTINUOUS CONDUCTED DISTURBANCE VOLTAGE TEST.....	10
5.1.1 Block Diagram of Test Setup.....	10
5.1.2 Test Setup and Procedure	10
5.1.3 Test Data and curve.....	11
5.2 RADIATED EMISSION BELOW 1 GHz.....	13
5.2.1 Block Diagram of Test Setup.....	13
5.2.2 Test Setup and Procedure	13
5.2.3 Test Data and Curve	14
6. HARMONICS OF CURRENT	20
6.1 BLOCK DIAGRAM OF TEST SETUP	20
6.2 TEST SETUP AND PROCEDURE	20
7. FLICKER.....	21
7.1 BLOCK DIAGRAM OF TEST SETUP	21
7.2 TEST SETUP AND PROCEDURE	21
8. EMS TEST.....	22
8.1 EN 61000-4-2(PURSUANT TO EN 61326-1) ELECTROSTATIC DISCHARGE IMMUNITY	23
8.2 EN 61000-4-6(PURSUANT TO EN 61326-1) INJECTED CURRENT (0.15 MHz TO 80 MHz)...	26
8.3 EN 61000-4-4(PURSUANT TO EN 61326-1) ELECTRICAL FAST TRANSIENT/BURST.....	27
8.4 EN 61000-4-5(PURSUANT TO EN 61326-1) SURGE IMMUNITY	28
8.5 EN 61000-4-11(PURSUANT TO EN 61326-1) VOLTAGE DIPS AND INTERRUPTIONS	29
8.6 EN 61000-4-3(PURSUANT TO EN 61326-1) RADIATED ELECTROMAGNETIC FIELD IMMUNITY	30
8.7 EN 61000-4-8(PURSUANT TO EN 61326-1) POWER FREQUENCY MAGNETIC FIELD IMMUNITY	33
9. APPENDIX I - PHOTOS OF TEST SETUP	34
10. APPENDIX II – PHOTOS OF EUT	38

TEST REPORT

1. TEST RESULTS SUMMARY

Test Item	Standard	Result
Conducted disturbance voltage at mains ports	EN 61326-1: 2013, EN 61326-2-3 Reference: EN 55011:2009+A1:2010	Pass
Radiated emission	EN 61326-1: 2013, EN 61326-2-3 Reference: EN 55011: 2009+A1:2010	Pass
Harmonic of current	EN 61326-1: 2013, EN 61326-2-3 Reference: EN 61000-3-2: 2006+A1:2009+A2:2009	Pass
Flicker	EN 61326-1: 2013, EN 61326-2-3 Reference: EN 61000-3-3: 2008	Pass
ESD immunity	EN 61326-1: 2013, EN 61326-2-3 Reference: EN 61000-4-2:2009	Pass
Radiated EM field immunity	EN 61326-1: 2013, EN 61326-2-3 Reference: EN 61000-4-3:2006 +A1:2008+A2:2010	Pass
EFT immunity	EN 61326-1: 2013, EN 61326-2-3 Reference: EN 61000-4-4:2004 +A1:2010	Pass
Surge immunity	EN 61326-1: 2013, EN 61326-2-3 Reference: EN 61000-4-5:2006	Pass
Inject current immunity	EN 61326-1: 2013, EN 61326-2-3 Reference: EN 61000-4-6: 2009	Pass
Power frequency magnetic field immunity	EN 61326-1: 2013, EN 61326-2-3 Reference: EN 61000-4-8:2010	N/A
Voltage dips and interruption immunity	EN 61326-1: 2013, EN 61326-2-3 Reference: EN 61000-4-11: 2004	Pass

Remark:

1. The symbol "N/A" in above table means Not Applicable.
2. When determining the test results, measurement uncertainty of tests has been considered.
3. The EUT belonging to Class B, Group 1 equipment, as requirement by EN 55011.

TEST REPORT

2. EMC RESULTS CONCLUSION

RE: EMC Testing Pursuant to EMC Directive 2014/30/EU and Electromagnetic Compatibility Regulations 2016 performed on the Infrared Thermometer, Models: UT305C+, UT305A+, UTi32.

UTi32 is identical to model UT305C+ except model name and software.

UT305C+ and UT305A+ are similar structure except temperature range of measurement.

Model		UT305C+	UT305A+
Range	Infrared measurement	-50°C~2200°C (-58°F~3992°F)	-50°C~1850°C (-58°F~3362°F)
	Ambient temperature	-10°C~50°C(14°F~122°F)	
	Relative humidity	10%RH~90%RH	

We tested the Infrared Thermometer, Model: UT305C+ to determine if it was in compliance with the relevant EN standards as marked on the Test Results Summary. We found that the unit met the requirement of EN 61326-1: 2013 and EN 61326-2-3: 2013 standards when tested as received. The worst case's test data was presented in this test report.

The production units are required to conform to the initial sample as received when the units are placed on the market.

General product information:

UT305A+/UT305C+ infrared thermometer (hereinafter referred to as "thermometer" or "product") is suitable for non-contact temperature measurement. It can determine the surface temperature of the target by measuring the infrared energy radiated by the target surface. The thermometer also supports contact temperature measurement with a type K thermocouple. Besides, it can measure the ambient temperature and relative humidity, and calculate the dew point temperature and wet bulb temperature.

TEST REPORT

3. LABORATORY MEASUREMENTS

Configuration Information

Support Equipment:

Equipment	Model No.	Rating	Supplier
Adapter	A1401	100-240~, 50/60Hz, 0.5A	Intertek

Rated Voltage and frequency under test: 230 V~, 50 Hz; 3.7V battery
Condition of Environment: Temperature: 22~28°C
Relative Humidity:35~60%
Atmosphere Pressure:86~106kPa

Notes:

1. The EMI measurements had been made in the operating mode produced the largest emission in the frequency band being investigated consistent with normal applications. An attempt had been made to maximize the emission by varying the configuration of the EUT.
2. The EMS measurements had been made in the frequency bands being investigated, with the EUT in the most susceptible operating mode consistent with normal applications. The configuration of the test sample had been varied to achieve maximum susceptibility.
3. Test Location:
Intertek Testing Services Shenzhen Ltd. Guangzhou Branch
All tests were performed at:
Room 02, & 101/E201/E301/E401/E501/E601/E701/E801 of Room 01 1-8/F., No. 7-2. Caipin Road, Science City, GETDD, Guangzhou, Guangdong, China
Except Radiated Disturbance and Radiated Susceptibility were performed at:
Room102/104, No 203, KeZhu Road, Science City, GETDD Guangzhou, China

4. Measurement Uncertainty

No.	Item	Measurement Uncertainty
1	Conducted Emission (9 kHz-150 kHz)	2.66 dB
2	Conducted Emission (150 kHz-30 MHz)	2.44 dB
3	Disturbance Power (30 MHz-300 MHz)	3.02 dB
4	Radiated Emission (30 MHz-1 GHz)	4.72 dB
5	Radiated Emission (1 GHz-6 GHz)	4.96 dB
6	Radiated Emission (6 GHz-18 GHz)	4.93 dB

The measurement uncertainty describes the overall uncertainty of the given measured value during the operation of the EUT.

Measurement uncertainty is calculated in accordance with CISPR16-4-2:2011+A1:2014 +A2:2018.

The measurement uncertainty is given with a confidence of 95%, k=2.

Determination of the test conclusion is based on IEC Guide 115 in consideration of measurement uncertainty.

TEST REPORT

4. EQUIPMENT USED DURING TEST

Conducted Disturbance-Mains Terminal (1)

Equipment No.	Equipment	Model	Manufacturer	Calibration Interval
EM080-05	EMI receiver	ESCI	R&S	1Y
EM006-05	LISN	ENV216	R&S	1Y
SA047-112	Digital Temperature-Humidity Recorder	RS210	YIJIE	1Y
EM004-04	EMC shield Room	8m×3m×3m	Zhongyu	1Y

Radiated Disturbance (30 MHz-1 GHz)

Equipment No.	Equipment	Model	Manufacturer	Calibration Interval
EM030-04	3m Semi-Anechoic Chamber	9×6×6 m3	ETS-LINDGREN	1Y
EM031-02	EMI Test Receiver (9 kHz~7 GHz)	R&S ESR7	R&S	1Y
EM033-01	TRILOG Super Broadband test Antenna (30 MHz-3 GHz)	VULB 9163	SCHWARZBECK	1Y
EM031-02-01	Coaxial cable	/	R&S	1Y
EM036-01	Common-mode absorbing clamp	CMAD 20B	TESEQ	1Y
SA047-118	Digital Temperature-Humidity Recorder	RS210	YIJIE	1Y
EM045-01-01	EMC32 software (RE/RS)	V10.01.00	R&S	N/A

Electrostatic Discharge (1)

Equipment No.	Equipment	Model	Manufacturer	Calibration Interval
EM077-04	ESD Simulator	NSG437	TESEQ	1Y
SA047-143	Digital Temperature-Humidity Recorder	AW5145Y	ASAIR	1Y

Electrical Fast Transient/Burst (1)

Equipment No.	Equipment	Model	Manufacturer	Calibration Interval
EM005-12	EFT Generator	NX5 b-1-300-16	EM TEST	1Y
EM005-10-01	Capacitive Coupling Clamp	CDN8014	TESEQ	1Y
SA047-140	Digital Temperature-Humidity Recorder	AW5145Y	ASAIR	1Y

Surge (3)

Equipment No.	Equipment	Model	Manufacturer	Calibration Interval
EM005-09	Surge/DIP Generator	NSG3040	TESEQ	1Y
SA047-140	Digital Temperature-Humidity Recorder	AW5145Y	ASAIR	1Y

TEST REPORT

Conducted Susceptibility (1)

Equipment No.	Equipment	Model	Manufacturer	Calibration Interval
EM046-04	Power Amplifier	CBA230M-080	TESEQ	1Y
EM084-02	Signal generator	SML02	R&S	1Y
EM003-01-04	Coupling&Decoupling Network	CDN M2+M3	Dr.Hubert GmbH	1Y
EM003-01-05	Attenuator	6dB	Dr.Hubert GmbH	1Y
EM019-01-01	Current Electromagnetic injection clamp	KEMZ801S	Teseq GmbH	1Y
EM019-03	Current Clamp	CIP 9136A	Teseq GmbH	1Y
SA047-140	Digital Temperature-Humidity Recorder	AW5145Y	ASAIR	1Y

Voltage Dips and Interruptions (2)

Equipment No.	Equipment	Model	Manufacturer	Calibration Interval
EM005-09	Surge/DIP Generator	NSG3040	TESEQ	1Y
EM005-09-01	Voltage Regulator	INA6501	TESEQ	1Y
SA047-140	Digital Temperature-Humidity Recorder	AW5145Y	ASAIR	1Y

Radiated Susceptibility

Equipment No.	Equipment	Model	Manufacturer	Calibration Interval
EM030-04	3m Semi-Anechoic Chamber	9x6x6 m ³	ETS LINDGREN	1Y
EM031-01	Signal generator	SMB100A	R&S	1Y
EM086-11	Power meter	NRP2	R&S	1Y
EM086-11-01	Power sensor	NRP-Z91	R&S	1Y
EM046-01	Power Amplifier	80RF1000-300	MILMEGA	1Y
EM046-03	Power Amplifier	AS0860-75-45	MILMEGA	1Y
EM061-05	Log. - Per. Broadband Antenna	VULP 9118 E	SCHWARZBECK	2Y
EM061-07	Stacked Log.-Per. Broadband Antenna	STLP 9149	SCHWARZBECK	2Y
EM034-01	Open Switch and Control Platform	OSP120/1505.3009K12	R&S	1Y
EM045-01-01	EMC32 software (RE/RS)	V10.01.00	R&S	1Y
SA047-118	Digital Temperature-Humidity Recorder	RS210	YIJIE	1Y

TEST REPORT

Detail of the equipment calibration due date:

Equipment No.	Cal. Due date (DD-MM-YYYY)
Conducted Disturbance-Mains Terminal (1)	
EM080-05	15/07/2022
EM006-05	06/06/2022
SA047-112	22/11/2022
EM004-04	06/01/2023
Conducted Disturbance-Mains Terminal (2)	
EM031-04	06/01/2023
EM006-06	03/09/2022
SA047-111	22/11/2022
EM004-03	06/01/2023
EM031-04-01	N/A
Conducted Disturbance-Load and Control Terminal (1)	
EM080-05	15/07/2022
EM080-05-01	02/09/2022
SA047-112	22/11/2022
EM004-04	06/01/2023
Conducted Disturbance-Load and Control Terminal (2)	
EM080-05	15/07/2022
EM005-06-01	02/09/2022
SA047-112	22/11/2022
EM004-04	06/01/2023
Conducted Disturbance-Telecom Terminal	
EM080-05	15/07/2022
EM011-05	05/04/2022
EM011-06	05/04/2022
EM006-06	03/09/2022
SA047-112	22/11/2022
EM004-04	06/01/2023
Conducted Disturbance-Antenna Terminal	
EM031-04	06/01/2023
EM084-02	19/07/2022
EM041-01	05/01/2022
EM041-02	05/01/2022
SA047-111	22/11/2022
EM004-03	06/01/2023
Click (1)	
EM008-02	16/11/2022
EM006-06	03/09/2022
SA047-111	22/11/2022
EM004-03	06/01/2023
Click (2)	
EM008-02	16/11/2022
EM008-02-01	16/11/2022
EM032-02	15/07/2022
SA047-111	22/11/2022
EM004-03	06/01/2023
Disturbance Power	
EM080-05	15/07/2022
EM081-04	09/03/2022
SA047-112	22/11/2022
EM004-04	06/01/2023

Equipment No.	Cal. Due date (DD-MM-YYYY)
Radiated Disturbance (CDN Method)	
EM080-05	15/07/2022
EM003-02	16/11/2022
EM003-03	16/11/2022
EM003-01-05	02/09/2022
EM032-02-01	15/07/2022
EM032-02-02	15/07/2022
SA047-112	22/11/2022
EM004-04	06/01/2023
Radiated electromagnetic disturbances (9 kHz-30 MHz)	
EM031-04	06/01/2023
EM061-04	07/03/2022
SA047-111	22/11/2022
EM004-03	06/01/2023
Radiated Disturbance (9 kHz-30 MHz)	
EM030-04	06/04/2022
EM031-02	16/11/2022
EM011-04	25/06/2022
EM031-02-01	05/04/2022
SA047-118	21/07/2022
EM045-01-01	N/A
Radiated Disturbance (30 MHz-1 GHz)	
EM030-04	06/04/2022
EM031-02	16/11/2022
EM033-01	18/10/2022
EM031-02-01	05/04/2022
EM036-01	18/07/2022
SA047-118	21/07/2022
EM045-01-01	N/A
Radiated Disturbance (1-18 GHz)	
EM030-04	06/04/2022
EM031-02	16/11/2022
EM031-03	23/12/2022
EM033-02	18/06/2022
EM033-02-02	05/04/2022
EM022-03	11/05/2022
SA047-118	21/07/2022
EM045-01-01	N/A
Harmonic Currents and Flicker (1)	
EM001-02	16/11/2022
SA047-111	22/11/2022
Harmonic Currents and Flicker (2)	
EM001-03	02/09/2022
EM001-03-01	02/09/2022
SA047-102	18/08/2022
EMF	
EM007-03	25/02/2022
SA047-112	22/11/2022
Induced Current Density (20 kHz-10 MHz)	
EM031-04	06/01/2023
EM007-02	06/01/2023
SA047-111	22/11/2022

Equipment No.	Cal. Due date (DD-MM-YYYY)
Electrostatic Discharge (1)	
EM077-04	08/04/2022
SA047-133	16/03/2022
Electrostatic Discharge (2)	
EM077-02	14/06/2022
SA047-133	16/03/2022
Electrical Fast Transient/Burst (1)	
EM005-12	05/04/2022
EM005-10-01	05/04/2022
SA047-102	18/08/2022
Electrical Fast Transient/Burst (2)	
EM005-10	07/05/2022
EM005-10-01	05/04/2022
SA047-102	18/08/2022
Surge (2)	
EM005-08	15/07/2022
SA047-102	18/08/2022
Surge (3)	
EM005-09	06/06/2022
SA047-102	18/08/2022
Conducted Susceptibility (1)	
EM046-04	17/12/2022
EM084-02	19/07/2022
EM003-01-04	02/09/2022
EM003-01-05	02/09/2022
EM019-01-01	02/09/2022
EM019-03	15/07/2022
SA047-102	18/08/2022
Conducted Susceptibility (2)	
EM019-01	05/04/2022
EM019-01-01	02/09/2022
EM019-01-02	02/09/2022
EM019-01-03	02/09/2022
EM019-03	15/07/2022
SA047-102	18/08/2022
Voltage Dips and Interruptions (2)	
EM005-09	06/06/2022
EM005-09-01	06/06/2022
SA047-102	18/08/2022
Radiated Susceptibility	
EM030-04	06/04/2022
EM031-01	19/07/2022
EM086-11	16/11/2022
EM086-11-01	16/11/2022
EM046-01	07/03/2022
EM046-03	14/09/2022
EM061-05	09/10/2023
EM061-07	09/10/2023
EM034-01	/
EM045-01-01	/
SA047-118	21/07/2022
Power Frequency Magnetic Field	
EM001-03	02/09/2022
EM001-03-02	02/09/2022
SA047-102	18/08/2022
Ring Wave	
EM005-11	05/04/2022
SA047-102	18/08/2022

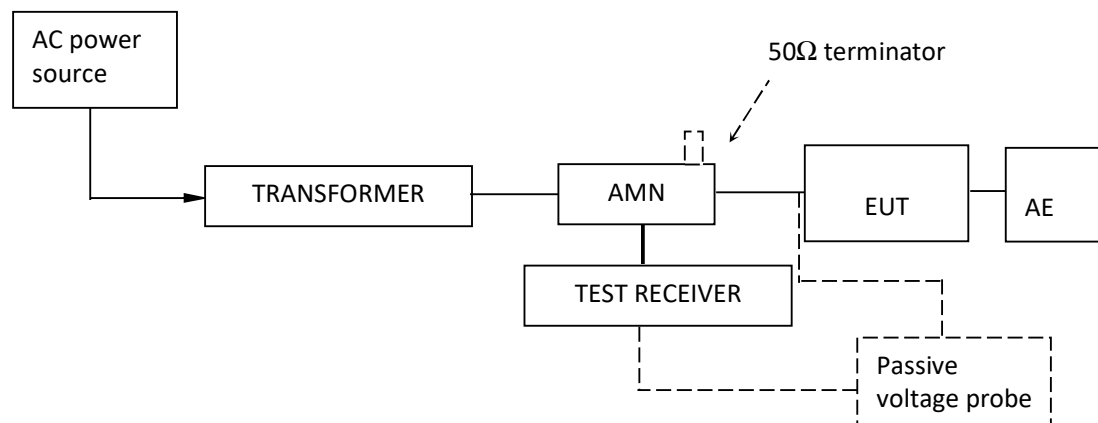
TEST REPORT

5. EMI TEST

5.1 Continuous Conducted Disturbance Voltage Test

Test Result: Pass

5.1.1 Block Diagram of Test Setup



5.1.2 Test Setup and Procedure

The EUT was set to achieve the maximum emission level. The mains terminal disturbance voltage was measured with the EUT in a shielded room. The EUT was connected to AC power source through an Artificial Mains Network which provide a 50Ω linear impedance Artificial hand is used if appropriate (for handheld apparatus). The load/control terminal disturbance voltage was measured with passive voltage probe if appropriate.

The table-top EUT was placed on a 0.8m high non-metallic table above earthed ground plane (Ground Reference Plane). And for floor standing EUT, was placed on a 0.1m high non-metallic supported on GRP. The EUT keeps a distance of at least 0.4m from a vertical metallic surface. The Artificial Mains Network is situated at a distance of 0.8m from the EUT.

During the test, mains lead of EUT excess 0.8m was folded back and forth parallel to the lead so as to form a horizontal bundle with a length between 0.3m and 0.4m.

The bandwidth of test receiver was set at 9 kHz. The frequency range from 150 kHz to 30 MHz was checked.

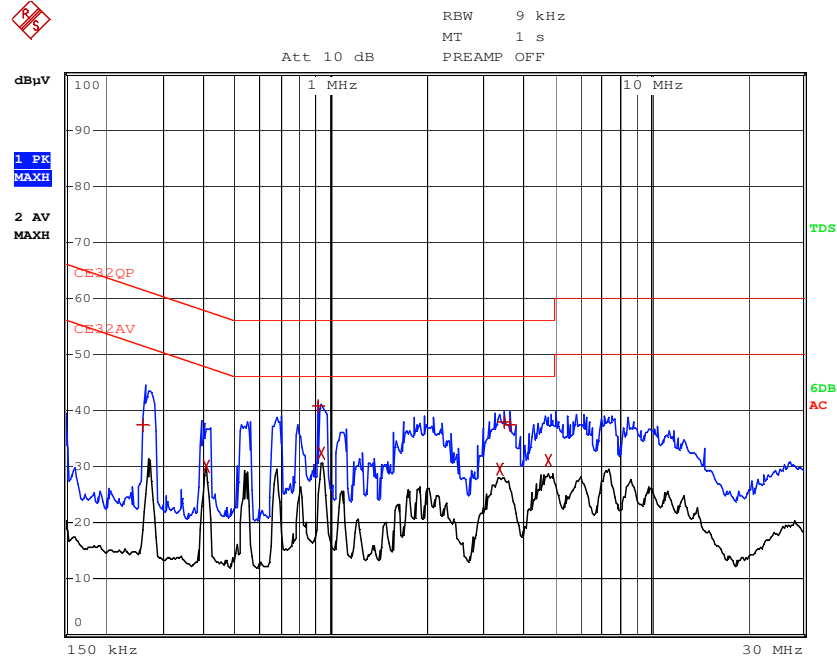
TEST REPORT

5.1.3 Test Data and curve

At mains terminal:

Tested Wire: Live

Operation Mode: charging and working



EDIT PEAK LIST (Final Measurement Results)				
Trace1:	CE32QP			
Trace2:	CE32AV			
Trace3:	---			
TRACE	FREQUENCY	LEVEL dBμV		DELTA LIMIT dB
1 Quasi Peak	262 kHz	37.33 L1		-24.02
2 Average	406 kHz	30.12 L1		-17.60
1 Quasi Peak	918 kHz	40.89 L1		-15.10
2 Average	938 kHz	32.33 L1		-13.66
2 Average	3.394 MHz	29.63 L1		-16.36
1 Quasi Peak	3.498 MHz	37.81 L1		-18.18
1 Quasi Peak	3.638 MHz	37.30 L1		-18.69
2 Average	4.802 MHz	31.10 L1		-14.90

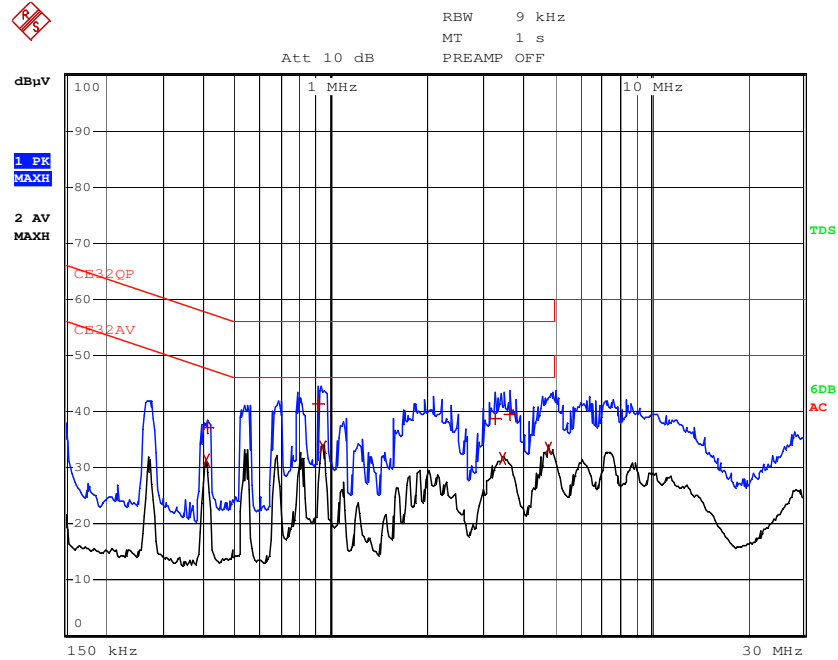
Remark:

1. Corr. (dB) = LISN Factor (dB) + Cable Loss (dB)
2. Level (dBμV) = Corr. (dB) + Read Level (dBμV)
3. Delta Limit (dB) = Level (dBμV)-Limit (dBμV)

TEST REPORT

Tested Wire: Neutral

Operation Mode: charging and working



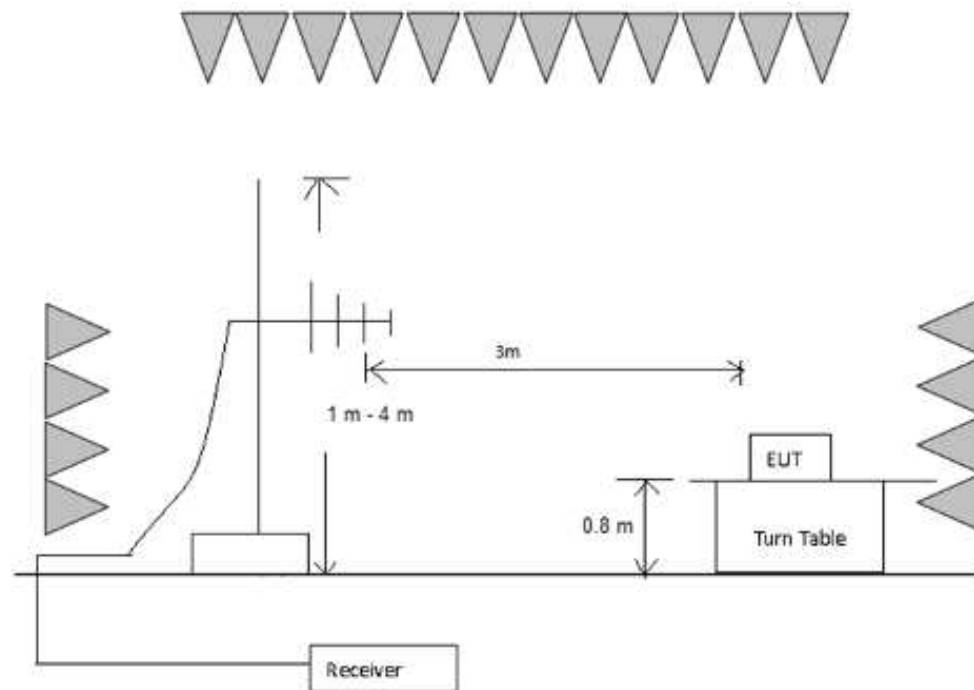
EDIT PEAK LIST (Final Measurement Results)				
Trace1:	CE32QP			
Trace2:	CE32AV			
Trace3:	---			
TRACE	FREQUENCY	LEVEL dBμV		DELTA LIMIT dB
2 Average	406 kHz	31.39	L1	-16.33
1 Quasi Peak	410 kHz	37.15	L1	-20.49
1 Quasi Peak	918 kHz	41.43	L1	-14.56
2 Average	942 kHz	33.77	L1	-12.22
1 Quasi Peak	3.274 MHz	38.64	L1	-17.35
2 Average	3.466 MHz	31.65	L1	-14.34
1 Quasi Peak	3.638 MHz	39.50	L1	-16.49
2 Average	4.802 MHz	33.56	L1	-12.43

TEST REPORT

5.2 Radiated Emission below 1 GHz

Test Result: Pass

5.2.1 Block Diagram of Test Setup



5.2.2 Test Setup and Procedure

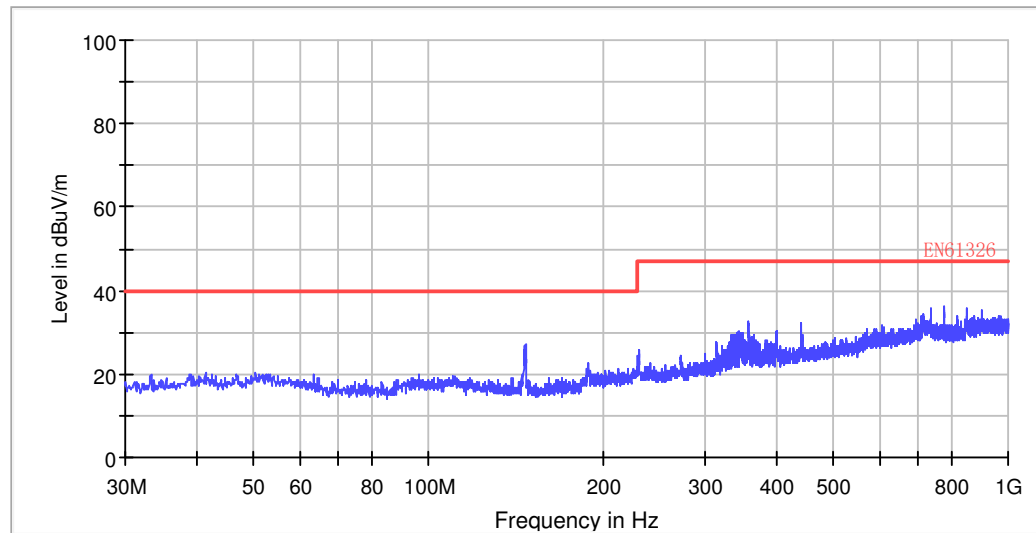
The measurement was applied in a semi-anechoic chamber. The EUT and simulators were placed on a 0.8m high foamed table above the horizontal metal ground plane. The turn table rotated 360 degrees to determine the position of the maximum emission level. The EUT was set 3 meters away from the receiving antenna which was mounted on an antenna mask. The antenna moved up and down between from 1meter to 4 meters to find out the maximum emission level.

Broadband antenna was used as receiving antenna. Both horizontal and vertical polarization of the antenna was set on measurement. In order to find the maximum emission, all of the interface cables were manipulated according to EN 55011 requirement during radiated test. The bandwidth setting on Test Receiver was 120 kHz. The frequency range from 30 MHz to 1000 MHz was checked

TEST REPORT

5.2.3 Test Data and Curve

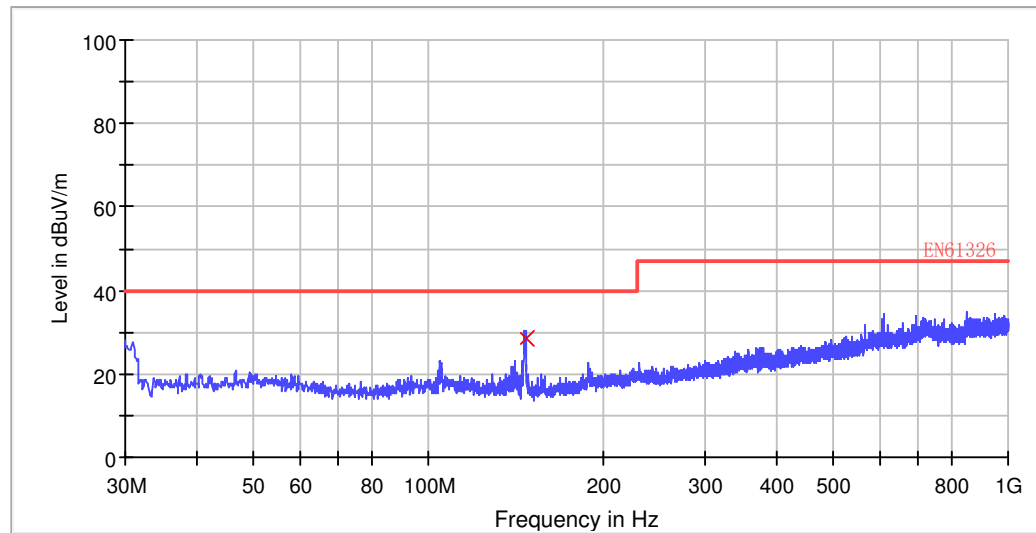
Operation Mode: charging and working
Horizontal



All emission levels are more than 6 dB below the limit.

TEST REPORT

Vertical



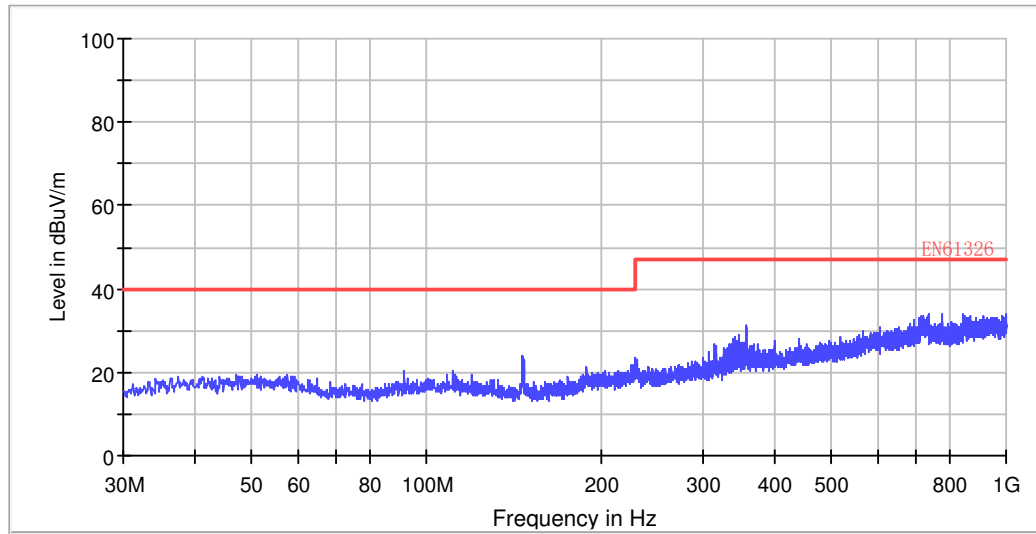
Frequency (MHz)	Quasi Peak (dBuV/m)	Bandwidth (kHz)	Pol	Corr. (dB)	Margin - QPK (dB)	Limit - QPK (dBuV/m)
147.080000	28.6	120.000	V	9.8	11.4	40.0

Remark:

1. Corr. (dB) = Antenna Factor (dB) + Cable Loss (dB)
2. Quasi Peak (dBμV/m) = Corr. (dB) + Read Level (dBμV)
3. Margin (dB) = Limit QPK (dBμV/m) – Quasi Peak (dBμV/m)

TEST REPORT

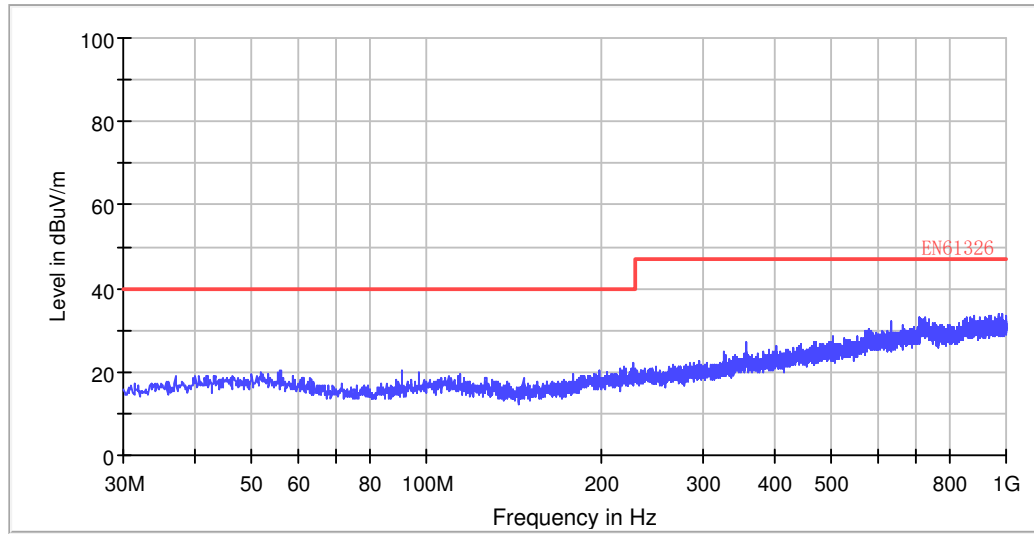
Operation Mode: working
Horizontal



All emission levels are more than 6 dB below the limit.

TEST REPORT

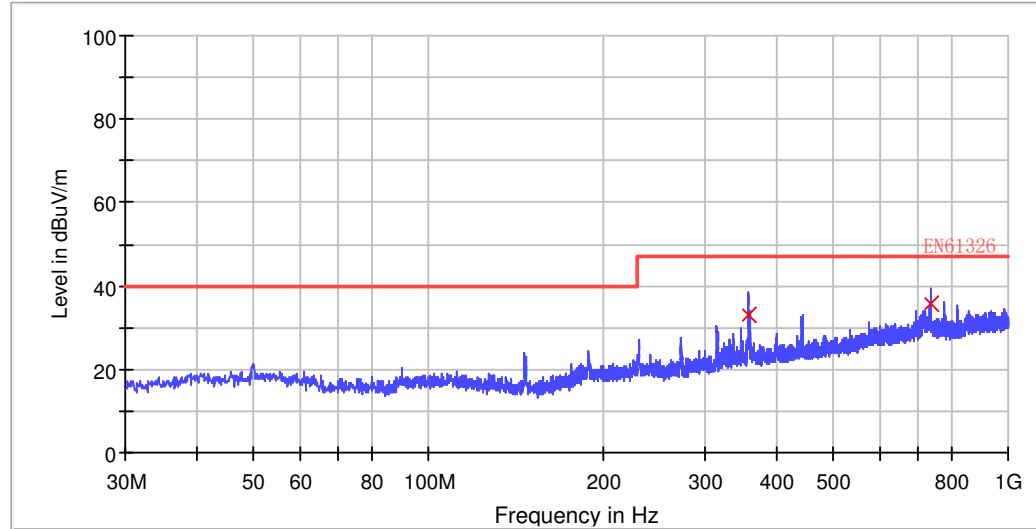
Vertical



All emission levels are more than 6 dB below the limit.

TEST REPORT

Operation Mode: data transmit
Horizontal



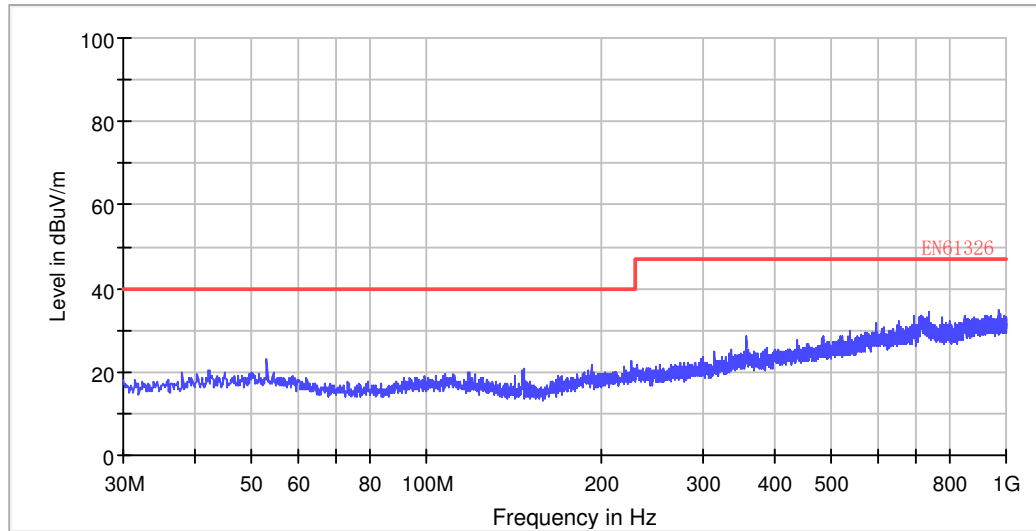
Frequency (MHz)	Quasi Peak (dBuV/m)	Bandwidth (kHz)	Pol	Corr. (dB)	Margin - QPK (dB)	Limit - QPK (dBuV/m)
357.000000	33.2	120.000	H	17.1	13.8	47.0
734.040000	35.7	120.000	H	23.5	11.3	47.0

Remark:

1. Corr. (dB) = Antenna Factor (dB) + Cable Loss (dB)
2. Quasi Peak (dBμV/m) = Corr. (dB) + Read Level (dBμV)
3. Margin (dB) = Limit QPK (dBμV/m) – Quasi Peak (dBμV/m)

TEST REPORT

Vertical



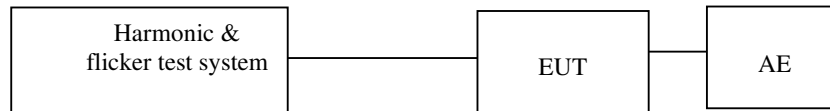
Frequency (MHz)	Quasi Peak (dBuV/m)	Bandwidth (kHz)	Pol	Corr. (dB)	Margin - QPK (dB)	Limit - QPK (dBuV/m)
357.000000	33.2	120.000	H	17.1	13.8	47.0
734.040000	35.7	120.000	H	23.5	11.3	47.0

TEST REPORT

6. Harmonics of current

Test Result: Pass

6.1 Block Diagram of Test Setup



6.2 Test Setup and Procedure

Harmonics of the fundamental current were measured up to 40 order harmonics using a digital power meter with an analogue output and frequency analyzer which was integrated in the harmonic & flicker test system. The measurements were carried out under steady conditions.

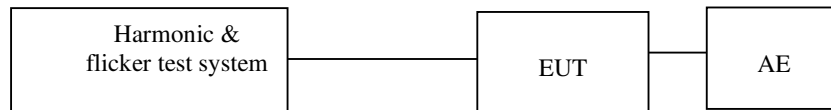
Remarks: This product is not defined as lighting equipment, and has rated power less than 75W, therefore, no limit apply according to EN 61000-3-2.

TEST REPORT

7. Flicker

Test Result: Pass

7.1 Block Diagram of Test Setup



7.2 Test Setup and Procedure

7.2.1 Definition

Flicker:	impression of unsteadiness of visual sensation induced by a lighting stimulus whose luminance or spectral distribution fluctuates with time.
Pst:	Short-term flicker indicator The flicker severity evaluated over a short period (in minutes); Pst=1 is the conventional threshold of irritability
Plt:	long-term flicker indicator; the flicker severity evaluated over a long period (a few hours). Using successive Pst value.
dc:	the relative steady-state voltage change
dmax:	the maximum relative voltage change
d(t):	the value during a voltage change

7.2.2 Test condition

Remarks: This apparatus is unlikely to produce significant voltage fluctuations and flicker by examination of the circuit diagram and specification of it. Therefore, it is deemed to fulfill the relevant standard without testing according to clause 6.1 of EN 61000-3-3.

TEST REPORT

8. EMS TEST

Performance Criteria:

- Criterion A: The apparatus shall continue to operate as intended during the test. No degradation of performance or loss of function is allowed below a performance level (or permission loss of performance) specified by the manufacturer, when the apparatus is used as intended. If the minimum performance level or the permissible performance loss is not specified by the manufacturer, then either of these may be derived from the product description and documentation and from what the user may reasonably expect from the apparatus if used as intended.
- Criterion B: The apparatus shall continue to operate as intended after the test. No degradation of performance or loss of function is allowed below a performance level (or permission loss of performance) specified by the manufacturer, when the apparatus is used as intended. During the test, degradation of performance is allowed, however, no change of actual operating state or stored data is allowed. If the minimum performance level or the permissible performance loss is not specified by the manufacturer, then either of these may be derived from the product description, and documentation, and from what the user may reasonably expect from the apparatus if used as intended.
- Criterion C: Temporary loss of function is allowed, provided the function is self-recoverable or can be restored by the operation of the controls, or by any operation specified in the instruction for use.

Operation mode of EMS test:

Test Item	Operation mode
ESD immunity	Charging and working/working/data transmit
Radiated EM field immunity	Charging and working/working/data transmit
EFT immunity	Charging and working
Surge immunity	Charging and working
Inject current immunity	Charging and working
Power frequency magnetic field immunity	N/A
Voltage dips and interruption immunity	Charging and working

Note: "N/A" means Not Applicable in below text.

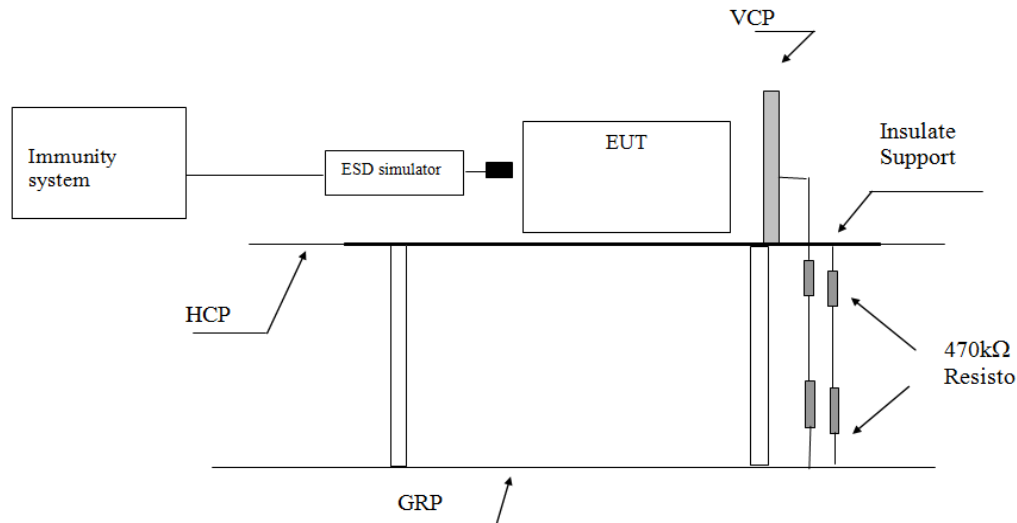
TEST REPORT

8.1 EN 61000-4-2(Pursuant to EN 61326-1) Electrostatic Discharge Immunity

Performance criterion: B

Test Result: Pass

8.1.1 Block Diagram of Test Setup



Note: HCP means Horizontal Coupling Plane,
VCP means Vertical Coupling Plane
GRP means Ground Reference Plane

8.1.2 Test Setup and Procedure

The EUT was put on a 0.8m high wooden table 0.1m high for floor standing equipment standing on the ground reference plane(GRP) 3m by 2m in size, made by iron 1.0 mm thick.

A horizontal coupling plane(HCP) 1.6m by 0.8m in size was placed on the table, and the EUT with its cables were isolated from the HCP by an insulating support thick than 0.5mm. The VCP 0.5m by 0.5m in size & HCP were constructed from the same material type & thickness as that of the GRP, and connected to the GRP via a 470kΩ resistor at each end.

The distance between EUT and any of the other metallic surface excepted the GRP, HCP & VCP was greater than 1m.

The EUT was arranged and connected according to its functional requirements.

Direct static electricity discharges were applied only to those points and surface which were accessible to personnel during normal usage.

TEST REPORT

On each preselected points 10 times of each polarity single discharge were applied. The time interval between successive single discharges was at least 1s.

The ESD generator was held perpendicular to the surface to which the discharge was applied. The discharge return cable of the generator was kept at a distance of 0.2m whilst the discharge was being applied. During the contact discharges, the tip of the discharge electrode was touched the EUT before the discharge switch was operated. During the air discharges, the round discharge tip of the discharge electrode was approached as fast as possible to touch the EUT.

Indirect discharge was conducted to objects placed near the EUT, simulated by applying the discharges of the ESD generator to a coupling plane, in the contact discharge mode.

After each discharge, the ESD generator was removed from the EUT, the generator was then retriggered for a new single discharge. For ungrounded product, a grounded carbon fibre brush with bleeder resistors ($2 \times 470 \text{ k}\Omega$) in the grounding cable was used after each discharge to remove remnant electrostatic voltage.

For air discharge, a minimum of 10 single air discharges were applied to the selected test point for each such area.

TEST REPORT

8.1.3 Test Result

Direct Application of ESD

Direct Contact Discharge

Applied Voltage (kV)	No. of Discharge for each point	Result	Discharged Points
4	20	A	Accessible metal parts of the EUT Conductive substrate with coating which is not declared to be insulating

Direct Air Discharge

Applied Voltage (kV)	No. of Discharge for each point	Result	Discharged Points
2, 4, 8	20	A	All accessible points where contact discharge cannot be applied such as Displays, Indicators light, Keyboard, Button, Switch, Knob, Air gap, Slots, Hole and so on

Indirect Application of ESD

Horizontal Coupling Plane under the EUT

Applied Voltage (kV)	No. of Discharge for each point	Result	Discharged Point
4	20	A	At the front edge of each HCP opposite the centre point of each unit of the EUT

Vertical Coupling Plane beside the EUT

Applied Voltage (kV)	No. of Discharge for each point	Result	Discharged Point
4	20	A	The centre of the vertical edge of the coupling plane

TEST REPORT

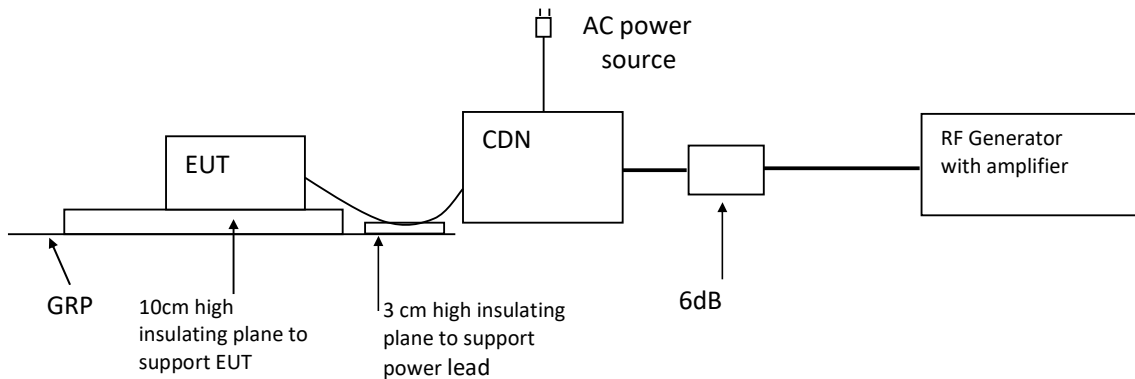
8.2 EN 61000-4-6(Pursuant to EN 61326-1) Injected Current (0.15 MHz to 80 MHz)

Tested Port: ☒ AC power ☐ DC power ☐ Signal/Control

Performance criterion: A

Test Result: Pass

8.2.1 Block Diagram of Test Setup



8.2.2 Test Setup and Procedure

The EUT was placed on an insulating support of 0.1m height above a ground reference Plane, arranged and connected to satisfy its functional requirement.

All relevant cables were provided with the appropriate coupling and decoupling devices at a distance between 0.1m and 0.3m from the projected geometry of the EUT on an insulating support of 0.03m height above the ground reference plane.

Test voltage was verified before each testing though power meter combined in the RF generator with AMP.

Dwell time was set to 3s and step was set as 1% to keep sufficient response time for EUT. The frequency from 0.15 MHz to 80 MHz was checked.

8.2.3 Test Result

Test Mode:

Port	Frequency (MHz)	Level	Result
A.C. Power Lines	0.15 to 80	3V (r.m.s.)	A
D.C. Power Lines	0.15 to 80	1V (r.m.s.)	N/A
Signal Lines	0.15 to 80	1V (r.m.s.)	N/A
Control Lines	0.15 to 80	1V (r.m.s.)	N/A

TEST REPORT

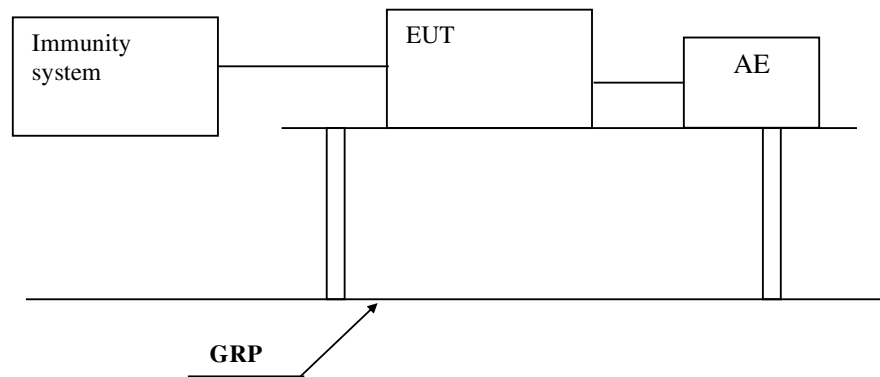
8.3 EN 61000-4-4(Pursuant to EN 61326-1) Electrical Fast Transient/Burst

Tested Port: ☒ AC power ☐ DC power ☐ Signal/Control

Performance criterion: B

Test Result: Pass

8.3.1 Block Diagram of Test Setup



8.3.2 Test Setup and Procedure

The EUT was placed on a 0.1m high wooden table, standing on the ground reference plane 3m by 2m in size, made by steel 1mm thick.

The distance between the EUT and any other of the metallic surface except the GRP was greater than 0.5m.

The mains lead excess than 0.5m was folded to avoid a flat coil and situated at a distance of 0.1m above the ground reference plane to insure the distance between the coupling device and the EUT was 0.5m.

The EUT was arranged and connected to satisfy its functional requirement and supplied by the coupling-decoupling network. Repetition Frequency was 5 kHz.

8.3.3 Test Result

Level	Polarity	A.C. Power supply line and protective earth terminal	D.C. Power Lines, Signal Line & Control Line
0.5 kV	+	N/A	N/A
0.5 kV	-	N/A	N/A
1 kV	+	A	N/A
1 kV	-	A	N/A

TEST REPORT

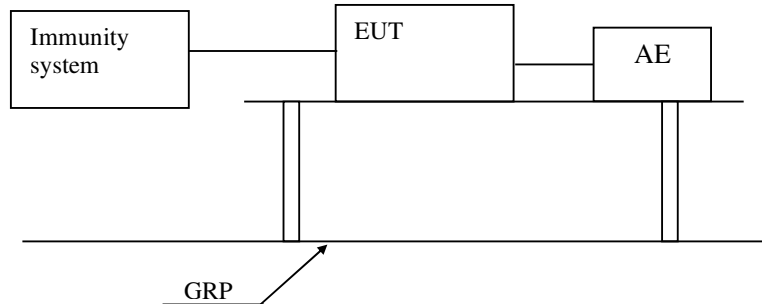
8.4 EN 61000-4-5(Pursuant to EN 61326-1) Surge Immunity

Tested Port: ☒ AC power ☐ DC power ☐ Signal/ Control

Performance criterion: B

Test Result: Pass

8.4.1 Block Diagram of Test Setup



8.4.2 Test Setup and Procedure

The surge was applied to the EUT power supply terminals via the capacitive coupling network.

Decoupling networks were required in order to avoid possible adverse effects on equipment not under test that might be powered by the same lines and to provide sufficient decoupling impedance to the surge wave so that the specified wave might be developed on the lines under test.

The EUT was arranged and connected according to its functional requirements.

The EUT was placed on a 0.1m high wooden support above the GRP), supplied by the coupling-decoupling network, and arranged and connected to satisfy its functional requirement. The power cord between the EUT and the coupling/decoupling network was less than 2 meters.

8.4.3 Test Result

Tested Port	Level	Result
AC power	Line to line ± 0.5 kV	A
AC power	Line to earth ± 0.5 kV, ± 1 kV	N/A
DC power	Line to line ± 0.5 kV	N/A
DC power	Line to earth ± 0.5 kV, ± 1 kV	N/A
Signal/Control	Line to earth ± 1 kV	N/A

TEST REPORT

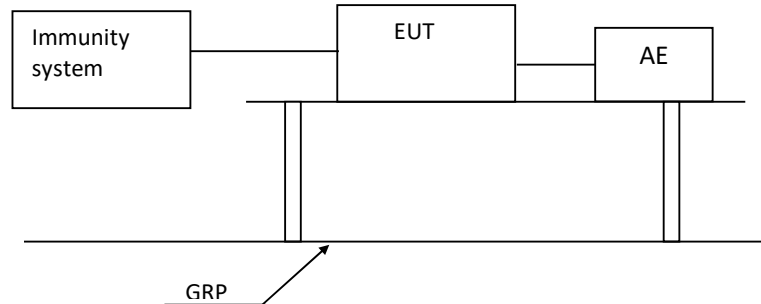
8.5 EN 61000-4-11(Pursuant to EN 61326-1) Voltage Dips and Interruptions

Tested Port: AC power

Performance criterion: B (only for test level of 0%U_T with 0.5 cycle and 1 cycle), C

Test Result: Pass

8.5.1 Block Diagram of Test Setup



8.5.2 Test Setup and Procedure

The EUT was placed on an insulating support of 0.8m height, standing on a ground reference plane, and arranged and connected to satisfy its functional requirement

The test was performed with the EUT connected to the test generator with the shortest power supply cable as specified by the EUT manufacturer.

The EUT was tested for each selected combination of test level and duration with a sequence of three dips/interruptions with intervals of 10 s minimum. Each representative mode of operation was tested.

Abrupt changes in supply voltage occurred at zero crossings of the voltage.

8.5.3 Test Result

Test condition				
Test Level in %U _T	50 Hz		60 Hz	
	Duration	Result	Duration	Result
0	0.5	A	0.5	N/A
0	1	A	1	N/A
70	25	A	30	N/A
0	250	B	300	N/A

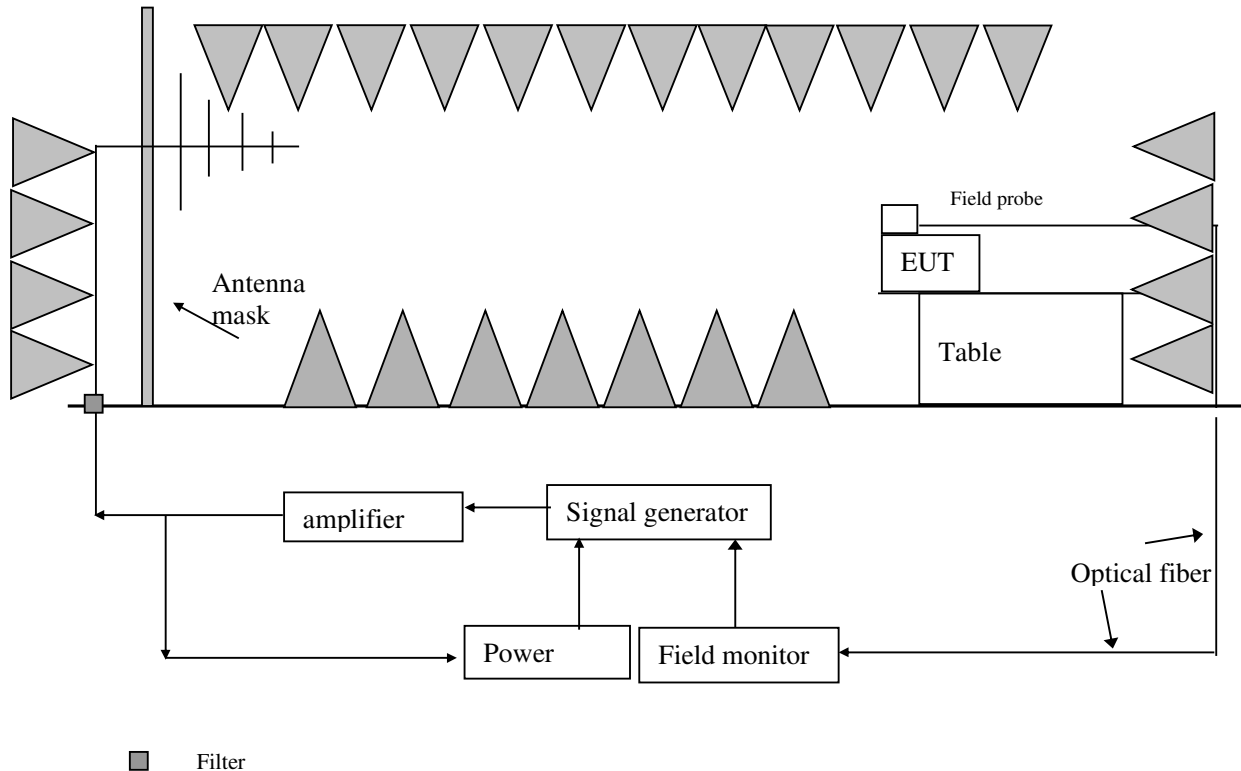
Remark: U_T is the rated voltage for the equipment.

TEST REPORT

8.6 EN 61000-4-3(Pursuant to EN 61326-1) Radiated Electromagnetic Field Immunity

Performance criterion: A
Test Result: Pass

8.6.1 Block Diagram of Test Setup



8.6.2 Test Setup and Procedure

The test was conducted in a fully anechoic chamber to maintain a uniform field of sufficient dimensions with respect to the EUT, and also in order to comply with various national and international laws prohibiting interference to radio communications.

The equipment was placed in the test facility on a non-conducting table 0.8m high (for floor standing EUT, is placed on a non-conducting support 0.1m height).

For all ports connected to EUT, manufacturer specified cable type and length was used, for those cables no specification, unshielded cable applied. Wire was left exposed to the electromagnetic field for a distance of 1m from the EUT. The EUT was arranged and connected according to its functional requirements

TEST REPORT

Before testing, the intensity of the established field strength had been checked by placing the field sensor at a calibration grid point, and with the field generating antenna and cables in the same positions as used for the calibration, the forward power needed to give the calibrated field strength was measured. Spot checks was made at a number of calibration grid points over the frequency range 80MHz to 1000MHz, both polarizations was checked.

After calibration, the EUT was initially placed with one face coincident with the calibration plane.

The frequency range was swept from 80 MHz to 1000 MHz at 3V/m EM field, 1.4 GHz to 2 GHz at 3V/m EM field and 2.0 GHz to 2.7 GHz at 1V/m EM field, with the signal 80% amplitude modulated with a 1 kHz sine-wave, pausing to adjust the r.f. signal level.

The dwell time at each frequency was 3s so as that the EUT to be exercised and be able to respond.

The step size was 1% of the fundamental with linear interpolation between calibrated points. Test was performed with the generating antenna facing each of the four sides of the EUT.

TEST REPORT

8.6.3 Test Result

Frequency (MHz)	Exposed Side	Field Strength (V/m)	Result
80 to 1000	Front	3V/m (r.m.s.)	A
80 to 1000	Left	3V/m (r.m.s.)	A
80 to 1000	Rear	3V/m (r.m.s.)	A
80 to 1000	Right	3V/m (r.m.s.)	A

Frequency (GHz)	Exposed Side	Field Strength (V/m)	Result
1.4 to 2.0	Front	3V/m (r.m.s.)	A
1.4 to 2.0	Left	3V/m (r.m.s.)	A
1.4 to 2.0	Rear	3V/m (r.m.s.)	A
1.4 to 2.0	Right	3V/m (r.m.s.)	A

Frequency (GHz)	Exposed Side	Field Strength (V/m)	Result
2.0 to 2.7	Front	1V/m (r.m.s.)	A
2.0 to 2.7	Left	1V/m (r.m.s.)	A
2.0 to 2.7	Rear	1V/m (r.m.s.)	A
2.0 to 2.7	Right	1V/m (r.m.s.)	A

TEST REPORT

8.7 EN 61000-4-8(Pursuant to EN 61326-1) Power Frequency Magnetic Field Immunity

Tested Port: Enclosure

Performance criterion: A

Test Result: Not Applicable

Remark: Equipment containing no Hall elements or magnetic field sensors is not susceptible to magnetic field. Hence, this equipment is deemed to fulfil the magnetic field test.

TEST REPORT

9. APPENDIX I - PHOTOS OF TEST SETUP

Conducted disturbance voltage at mains ports



Radiated emission (30 MHz–1000 MHz)

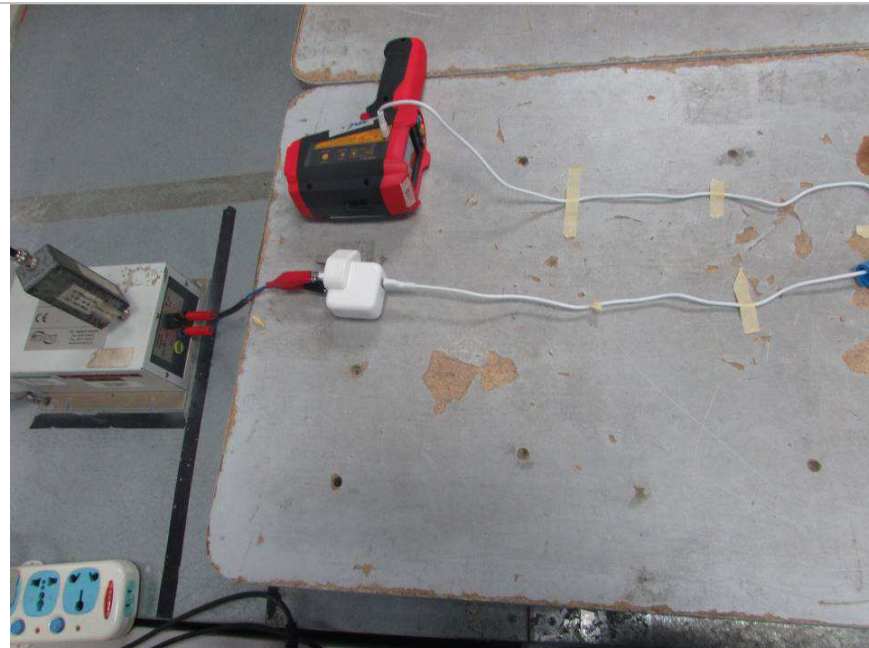


TEST REPORT

ESD Immunity



Inject current immunity

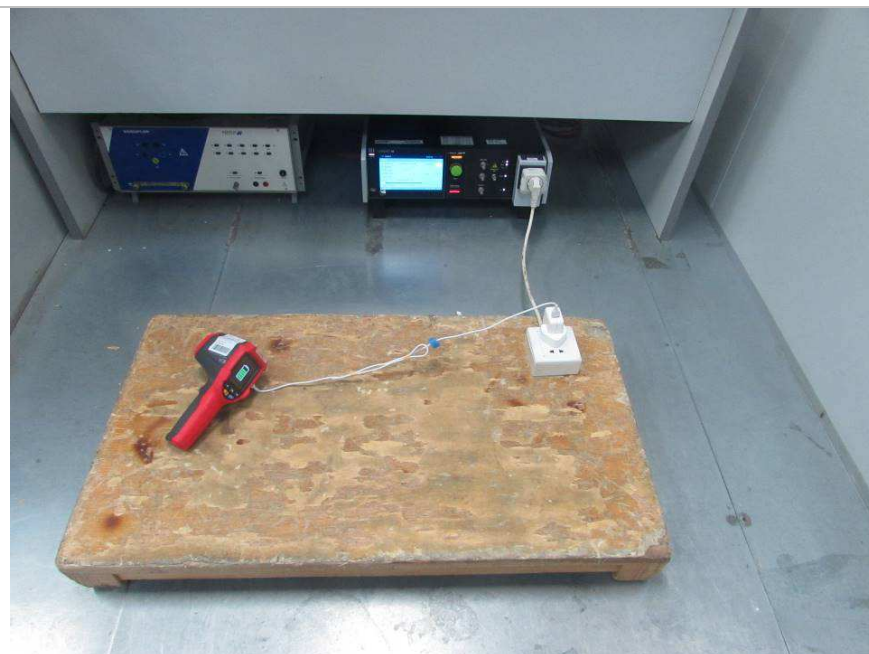


TEST REPORT

Surge and DIP Immunity



EFT Immunity



TEST REPORT

Radiated EM field immunity



TEST REPORT

10. APPENDIX II – PHOTOS OF EUT



Photo 1 – Left side view



TEST REPORT



Photo 3 – Front view



Photo 4 – Rear view

TEST REPORT

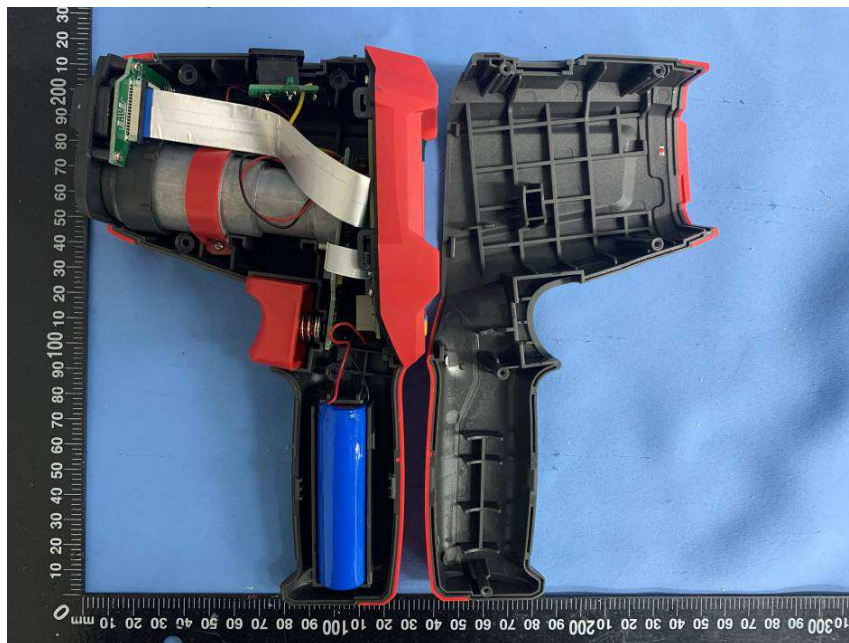


Photo 5 - Internal View

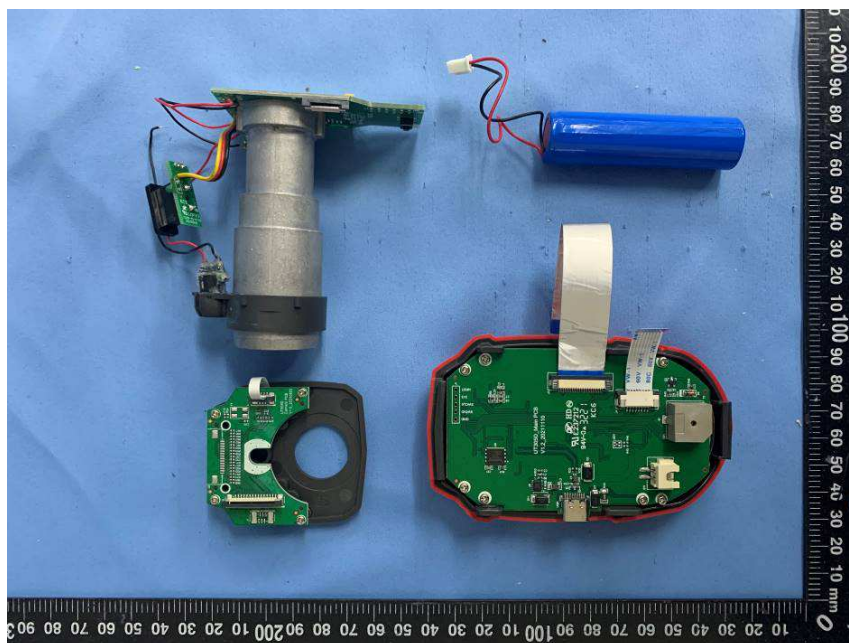


Photo 6 – Internal module View

TEST REPORT

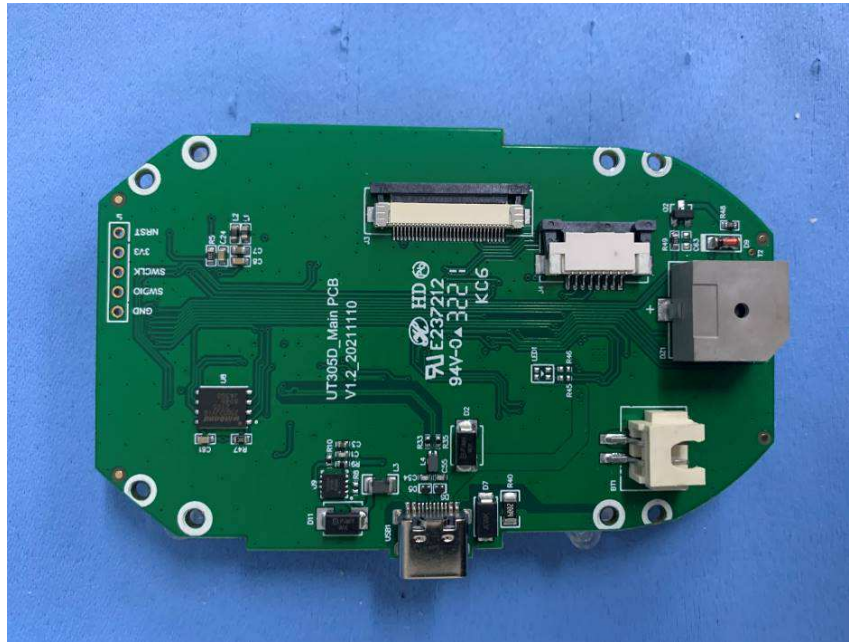


Photo 7 – Top PCB View of main board

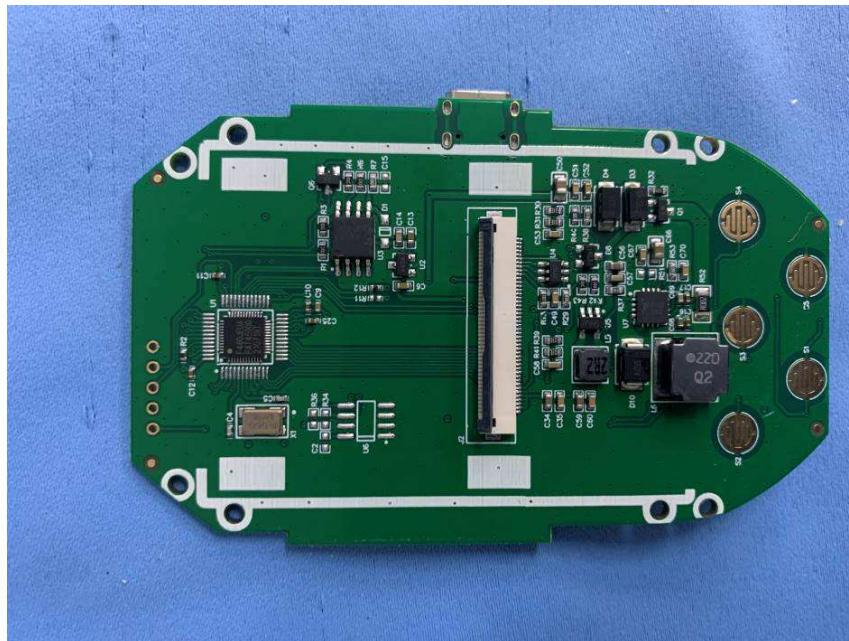


Photo 8 – bottom PCB View of main board

Remark: UT305A+ and UT305C+ have same marking except mode name and IR range.

TEST REPORT



Photo 9 – USB data Cable

*****End of Report*****